

BB350 Hydraulic Briquette Breaker

Technical specifications



The BB350 Hydraulic Briquette Breaker is reliable and a low-cost solution in combination with our briquetting presses.

The briquette line feeds from the cooling line into the briquette breaker from the left side. A sensor will register the front edge of the briquette line and then the knife will immediately divide the briquette line. After each briquette division, the broken briquette is pushed forward and out onto the outlet line.

The sensor's location can be changed, which changes the length of the briquette. The lengths can be set from 150 to 350 mm

The breaker will break the logs with a fairly uniform

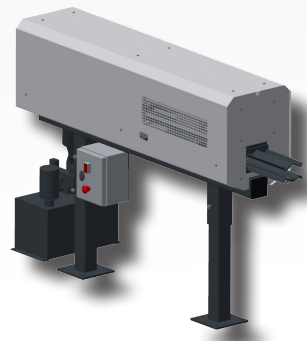
length (+/- 10-15mm). The cost of operation is considerably lower, as spare parts costs such as blades and sharpening of saw blades are avoided. The breaker is ideal for packages such as boxes or paper bags, but when using shrink film packages the difference in length can be noticed.

BB350 specifications

- The briquette breaker can divide briquettes of sizes ranging from Ø60 to Ø100mm
- Briquette length from 150-350mm and will vary +/- 10-15mm in length depending upon the type of press and

- raw material
- Hydraulic motor 4.0kW
- Weight 300kg

Specifications	BB350 Briquette Breaker
Briquette diameter	Ø60 - Ø100 mm
Briquette length	150-350 mm (+/- 10-15mm)
Cycle time	15 cuts/minute
Hydraulic motor	4 kW
Suction connections for sawdust	Ø100 mmx2
Dimensions (LxWxH)	2000x1100x1150mm
Weight	300kg



BB350 Briquette Breaker



Consumer briquettes in card board boxes



Saw vs. breaker



Consumer briquettes in paper bags



Briquettes in shrink wrap